

New Plug Checker – 2024 version 2.0

Use instructions

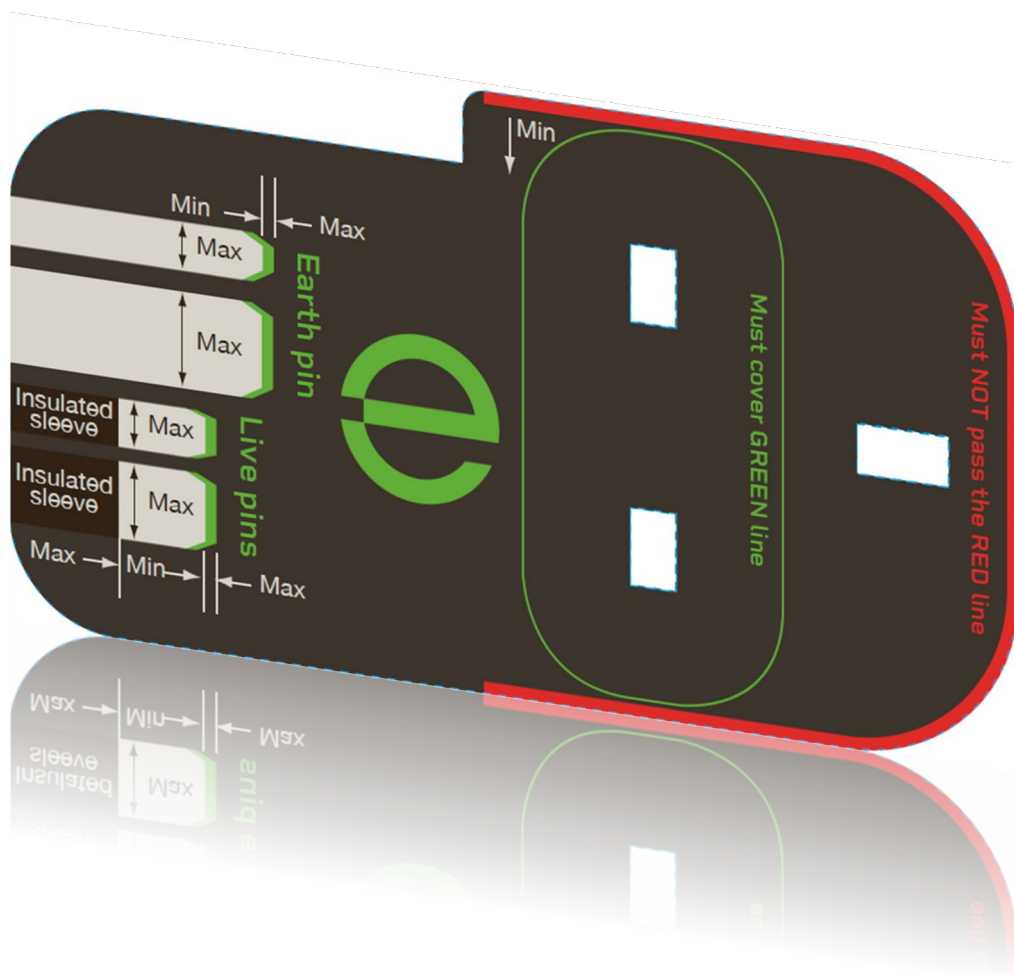
Plug safety

Sub-standard and counterfeit electrical plugs and chargers can be deadly.

Electrical Safety First's 'Plug Checker' has been developed to allow you to quickly check and ensure the plugs fitted to your electrical appliances and any device with UK plug pins (such as a phone charger) measure up to basic safety requirements!

It enables the user to perform several simple measurement checks. A plug that fails any of these checks is a clear indication that safety testing has never been carried out by the manufacturer, and there might be other hidden dangers, all of which could put you at risk.

With the new 2024 plug checker, **two additional checks** have been added to the five checks that could be performed with previous versions.

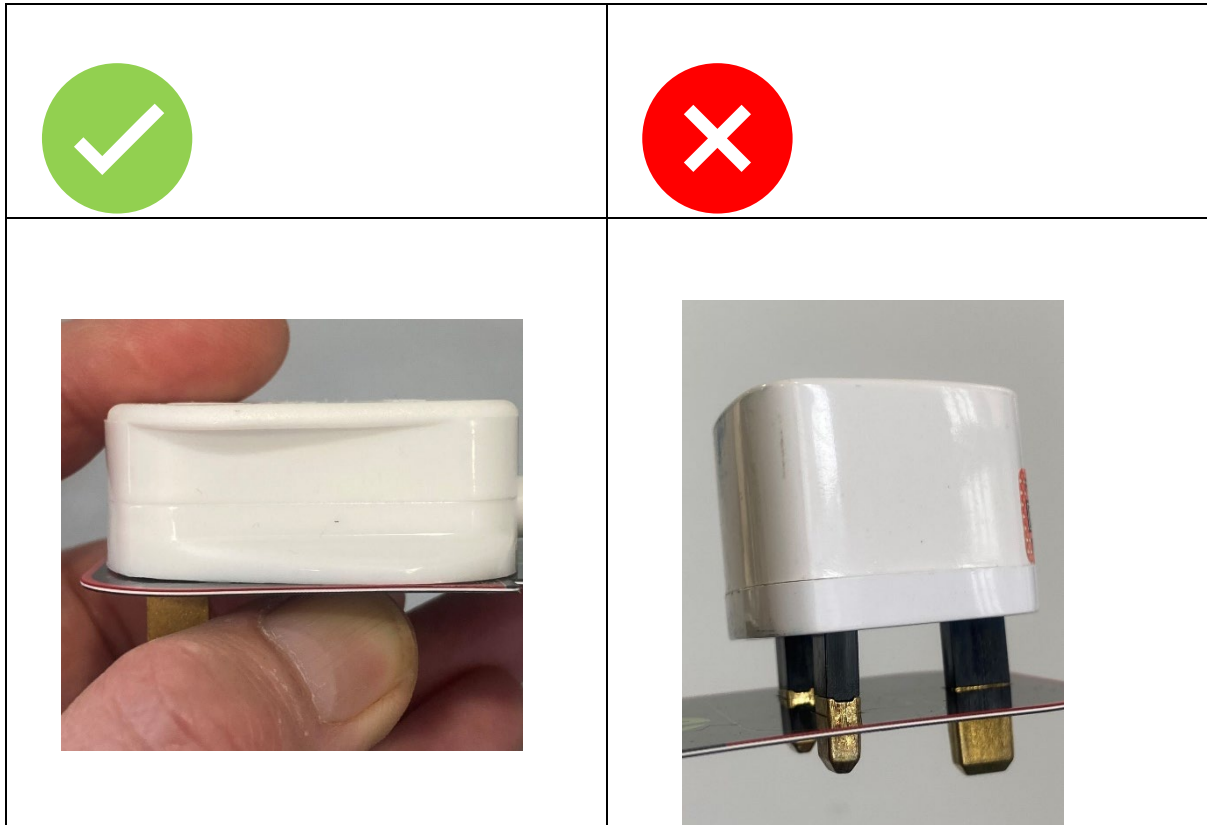


New Plug Checker – 2024 version 2.0

Use instructions

Plug checker instructions (for Plugs):

- (1) Insert a plug into the holes. Minimal resistance must be felt when sliding the pins through the checker. Do not attempt to force the plug into the plug checker



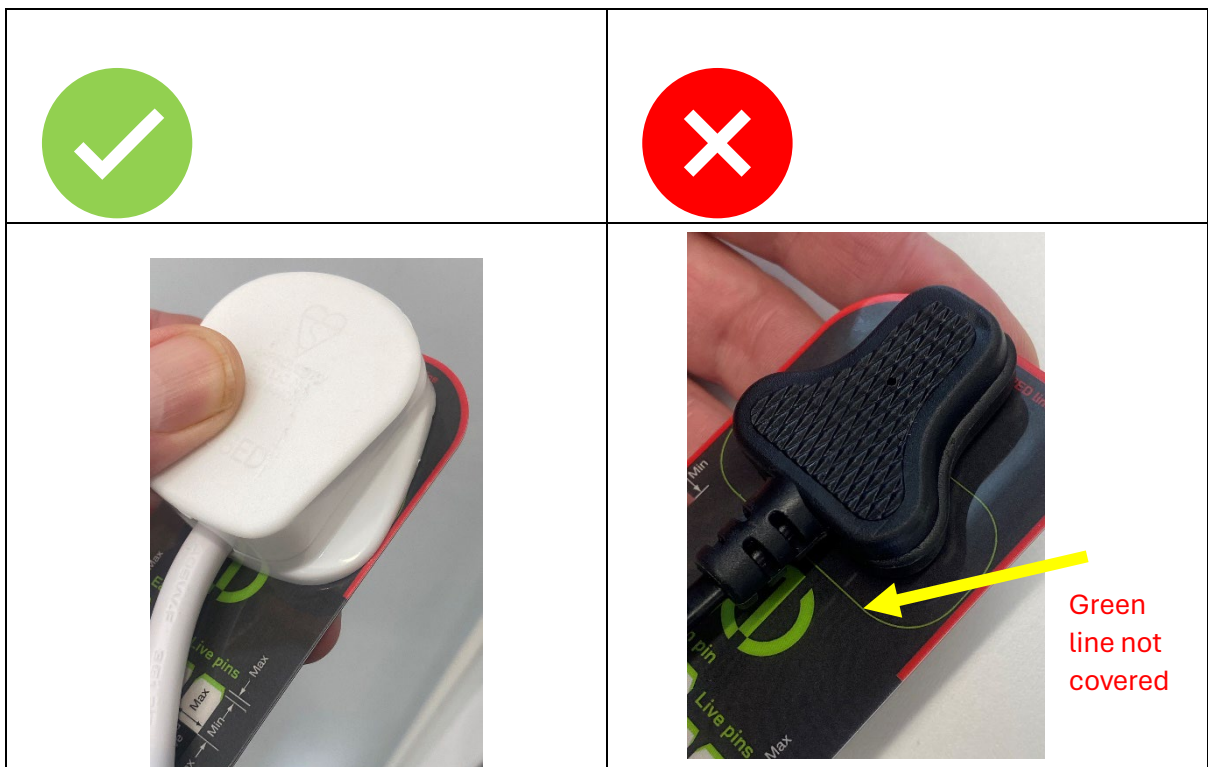
- (2) If the plug cannot be fully inserted with minimal resistance, say due to incorrect size or alignment of the pins, the plug fails the test.
- (3) With the plug fully inserted into the plug checker, the plug body must not exceed the **RED** outline of the plug checker.

New Plug Checker – 2024 version 2.0

Use instructions



(4) With the plug fully inserted into the plug checker, all of the GREEN line must not be visible.



New Plug Checker – 2024 version 2.0

Use instructions

- (5) Pin lengths and widths must also be checked; pin lengths must be within the **GREEN ZONE**, pin widths must not exceed that shown on the diagram and the Insulation on the live pins must be within the **BLACK** zone.



A plug that fails to meet the above is unlikely to meet UK safety standards.

It should be noted that the plug checkers are only a guide and are not intended to be used as a tool to demonstrate conformity or non-conformity with the requirements of BS 1363-1. They are a handy guide to identify products that may have an issue and where further investigation is required. It is important to confirm the measurements of any identified products with more accurate tools, such as those used by a test house.

New Plug Checker – 2024 version 2.0

Use instructions

Plug checker instructions (for adaptors and plug-in chargers):

- (6) Complete the checks (1), (2), (3) and (4) as described above for plugs.
- (7) The depth of the plug section can be checked against the cut-out section of the plug checker.



A plug section that fails to meet the above is unlikely to meet UK safety standards.

It should be noted that the plug checkers are only a guide and are not intended to be used as a tool to demonstrate conformity or non-conformity with the requirements of BS 1363-1. They are a handy guide to identify products that may have an issue and where further investigation is required. It is important to confirm the measurements of any identified products with more accurate tools, such as those used by a test house.